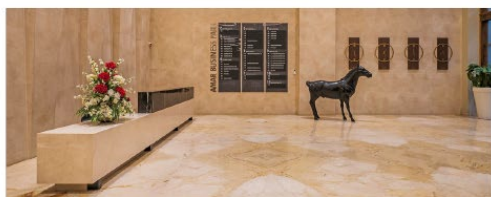


Projects Highlights



Project Highlights

- Location : Baner, Pune
 - 1 Tower, 11 Storey, Boutique Offices
- Amar Business Park provides a range of features that ensure business is always a pleasure. A drop-off area for important employees or clients, a relaxing courtyard, cascading water features, pedestrian walkways, tranquil landscaped areas and refreshing greenery. With flexible options available in selection of space requirements, it is easy to find the space that one needs. It is an intelligently designed project that boasts of a strategic location that offers a rare opportunity of being closely connected with high-end residential hub at Alandi, Baner and Pashan.

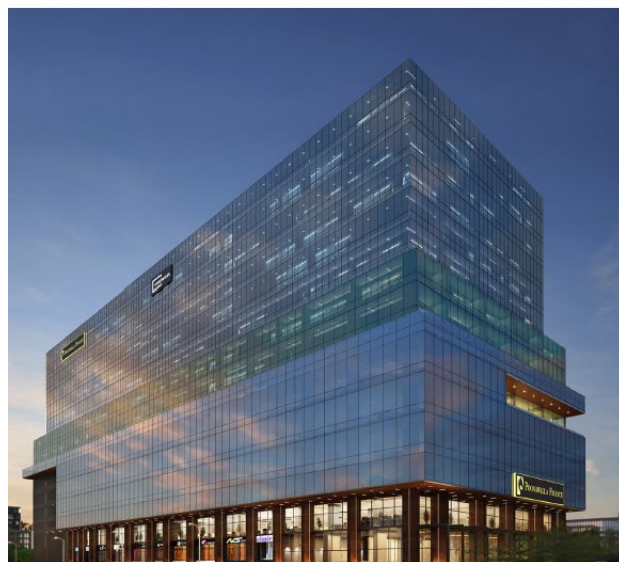


AP81

Project Highlights

- Location : Mundwa, Pune
- 2 Towers, 18 Floors

MAHARERA NO. : PS2000020959



Project Highlights

- Location : Baner, Pune
- 1 Tower, 11 Floors

MAHARERA NO. : PS2000019551

SBC – Selip Bulding Construction



SELIP SPA Via Provinciale 36 – 43012 Fontanellato, Parma, Italy – VAT IT02265280343